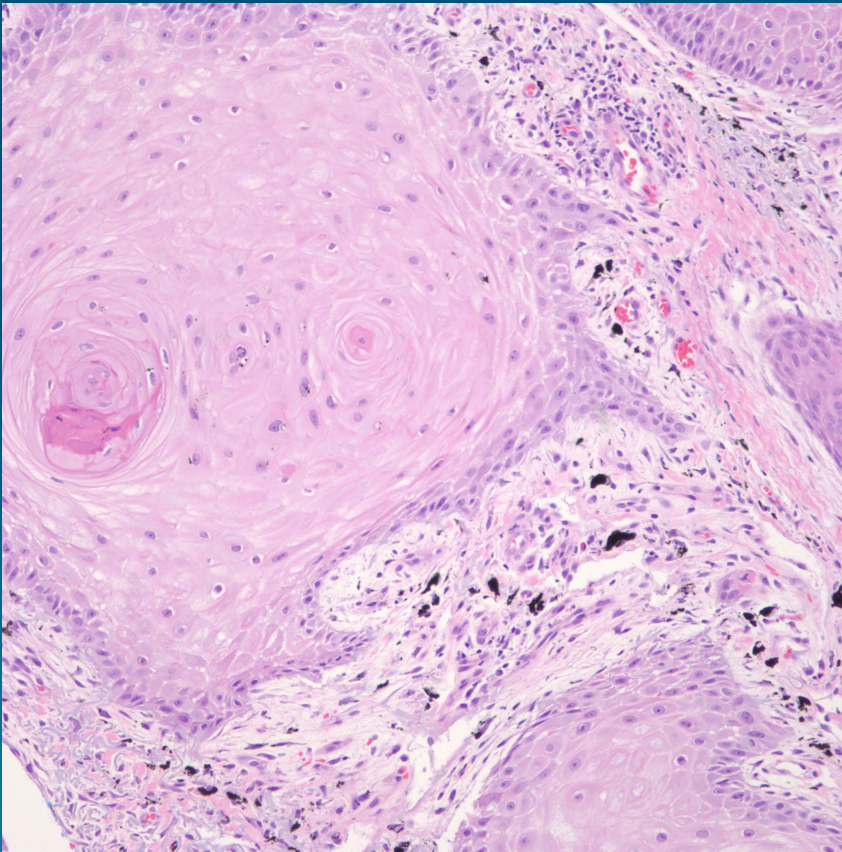


What is the best diagnosis?

- A. Malignant melanoma
- B. Pigmented basal cell carcinoma
- C. Squamous cell carcinoma with tattoo
- D. Tumoral melanosis
- E. Blue nevus

Squamous cell carcinoma,
Keratoacanthoma type,
Arising with tattoo

Pearls



- Uncommon complication or association with tattoos
- Look for characteristic tattoo pigment in dermis
- May have foreign body reaction secondary to tattoo procedure